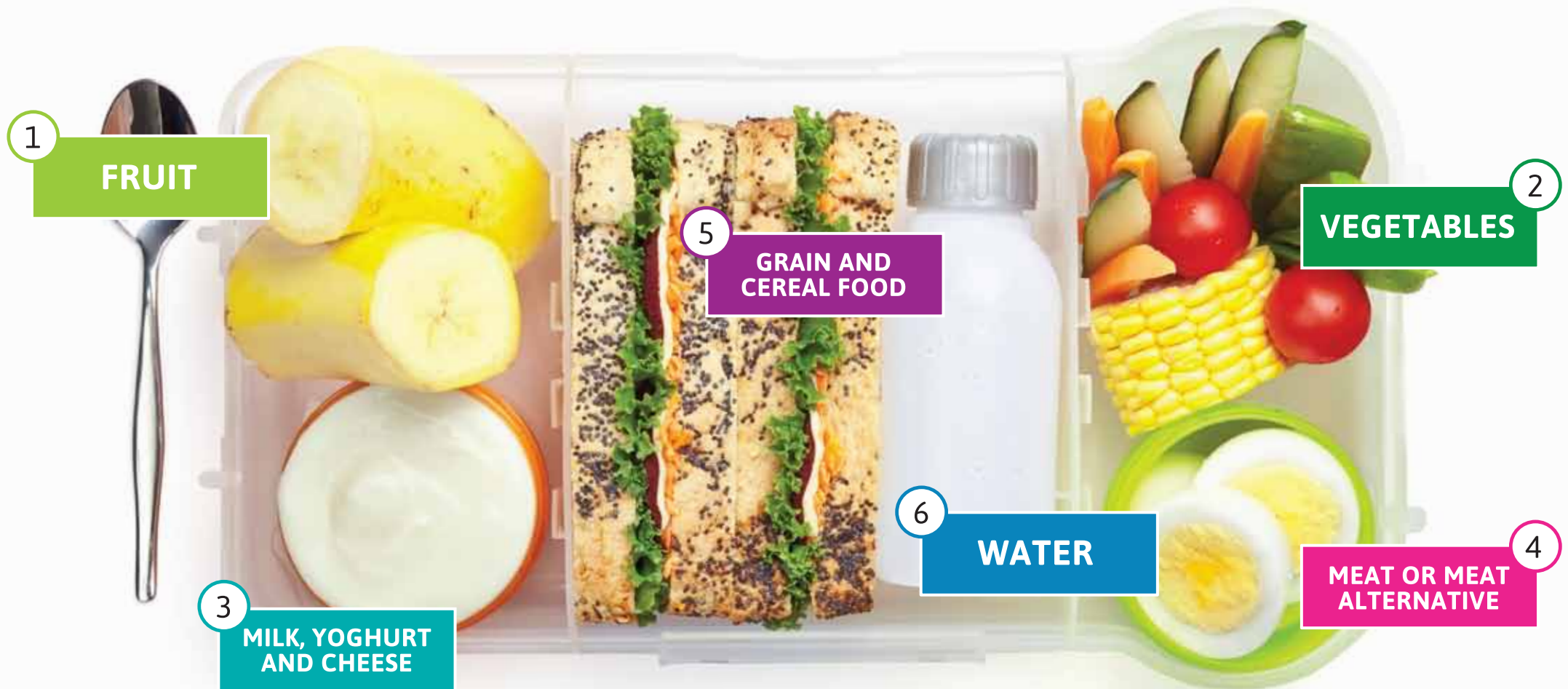


# FOR A HEALTHY LUNCHBOX

# PICK & MIX

## SOMETHING FROM EACH GROUP 1-6!



Developed in conjunction with the Healthy Together Achievement Program to support a whole-school approach to healthy eating. Healthy Together Victoria is improving the health of Victorians, funded by the Victorian Government.

## FRUIT 1

## FRESH FRUIT

- Apple
- Banana
- Mandarin
- Orange quarters
- Passionfruit halves (with spoon)
- Watermelon, honeydew, rockmelon chunks
- Pineapple chunks
- Grapes
- Plums
- Nectarines, peaches, Apricots
- Strawberries
- Cherries
- Kiwifruit halves (with spoon)
- Pear

## MIXED FRUIT

- Fruit salad
- Fruit kebabs

## DRIED FRUIT

- Dried fruit, nut, popcorn mixes\*

## TINNED FRUIT/SNACK PACKS/CUPS

- In natural juice (not syrup)

## VEGETABLES 2

## FRESH CRUNCHY VEGIES

- Corn cobs
- Carrot sticks
- Capsicum sticks
- Green beans
- Cucumber sticks
- Celery sticks
- Snow peas
- Tomatoes (e.g. cherry and Roma tomatoes)
- Mushroom pieces

## Can serve with either:

- Hommus
- Tomato salsa
- Tatziki
- Beetroot dip
- Natural yoghurt

## SALADS

- Coleslaw and potato salad (reduced fat dressing)
- Mexican bean, tomato, lettuce and cheese salad
- Pesto pasta salad\*

## BAKED ITEMS

- Grilled or roasted vegetables
- Wholemeal vegetable muffins or scones
- Vegetable slice (with grated zucchini and carrot)
- Popcorn

## SOUP (In small thermos)

- Pumpkin soup
- Potato and leak soup
- Chicken and corn soup

## MILK, YOGHURT AND CHEESE 3

- Milk
- Calcium-enriched soy and other plant-based milks
- Yoghurt (frozen overnight)
- Custard

## Tip:

- Freeze the night before to keep cool during the day

- Cheese cubes, sticks or slices
- Cottage or ricotta cheese
- Cream cheese
- Tatziki dip

## Can serve with either:

- Fruit
- Wholegrain cereal, low in sugar
- Vegetable sticks
- Rice and corn cakes
- Wholegrain wheat crackers

## MEAT OR MEAT ALTERNATIVE 4

- Tinned tuna or salmon in springwater
- Lean roast or grilled meats (e.g. beef, chicken, kangaroo)
- Falafel balls
- Lean meat or chicken patties
- Tinned tuna or salmon patties
- Lentil patties
- Lean deli meats (e.g. ham, silverside, chicken)
- Boiled eggs
- Baked beans (canned)
- Tofu cubes
- Hommus dip
- Lean meat or chicken kebab sticks
- Peanut butter\*

## Can serve with:

- Wholegrain sandwich, roll, pita or wrap bread with salad
- Rice and corn cakes
- Wholegrain wheat crackers
- Side salad

- Vegetable frittata
- Skinless chicken drumsticks
- Savoury muffins or scones (e.g. lean ham, cheese and shallots)
- Homemade pizzas with lean roast or deli meats and vegetables

## Can serve with:

- Side salad
- Steamed or roasted vegetables

## GRAIN AND CEREAL FOOD 5

## MAINS

- Wraps
- Sandwiches
- Rolls
- Toasted sandwiches

**Tip:** Use breads such as wholemeal, multigrain, rye, sourdough, pita, flat, corn, mountain, lavash, white fibre-enriched, soy and linseed, herb, naan, bagels, foccacias, fruit bread and English muffins.

- Pasta dishes
- Rice, quinoa or cous cous dishes
- Noodle dishes
- Sushi

## SAVORY BAKED ITEMS

- Homemade pizzas
- Wholemeal savoury muffins or scones (e.g. ham, cheese and corn muffins)
- Vegetable based muffins
- Pasta or noodle bake

## SWEET BAKED ITEMS

- Fruit loaf
- Wholemeal fruit based muffins

## SNACKS

- High fibre, low sugar cereal (e.g. muesli)
- English muffins
- Crackers
- Crispsreads
- Rice cakes
- Corn thins
- Wholemeal scones
- Pikelets
- Crumpets
- Hot cross buns (no icing)

## WATER 6

- Take a water bottle (for refilling throughout the day)

## Tip:

- Freeze overnight to keep foods cool in lunchboxes

**Sweet and savoury snack foods (e.g. muesli/fruit/nut bars, biscuits, crisps, cakes, muffins, slices) should be limited in lunchboxes. They can lead to excess energy intake if consumed in large amounts.**

**Sugar sweetened drinks and confectionery should not be provided in lunchboxes. They can lead to excess energy intake and tooth decay.**



\*Check your school's policy regarding the use of nuts and products containing nuts.

