

## FROM THE PRINCIPAL



As the year draws to a close Thomastown Primary School is well situated for the year ahead. We have our staffing in place and we look forward to more full time staff being part of our team.

In 2023 we will be saying goodbye to Stacey Abbott, Sarah Samball, Kartia Pearson and Ves Craig. All are off to exciting new opportunities in their careers and Stacey returning to South Australia. We have full time replacements with the appointment of Amana Willcocks and Keely Lowry. Both women will teach in 1-2. We also have a new teacher to teach STEM – Kath Salter. This will be a wonderful addition to our curriculum area and Kath's experience and passion in this area will be an asset to our team.

We have increased Kerry's hours as ES and this will help support our kids across the school.

I thank you all for your support and kindness during 2023. Have a happy and safe holiday and we look forward to seeing you back at school on the 31 January, and our new Preps on the 1st of Feb.

Marion Wetherbee

PO BOX 467

10 Spring Street Thomastown 3074

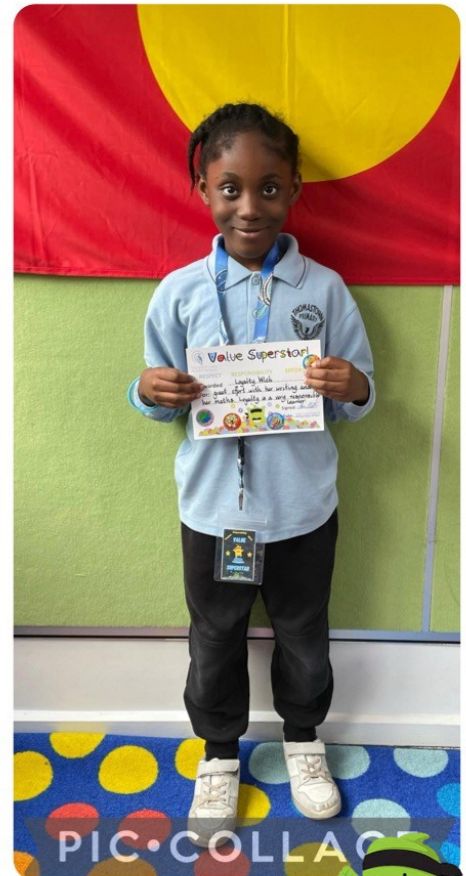
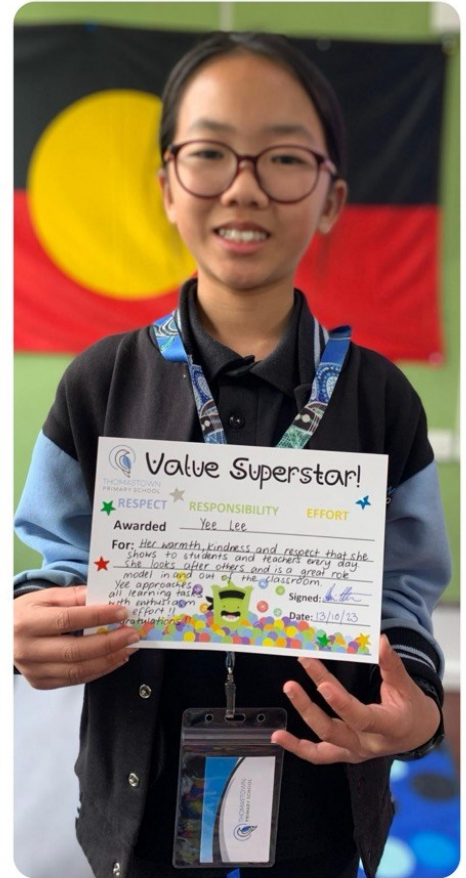
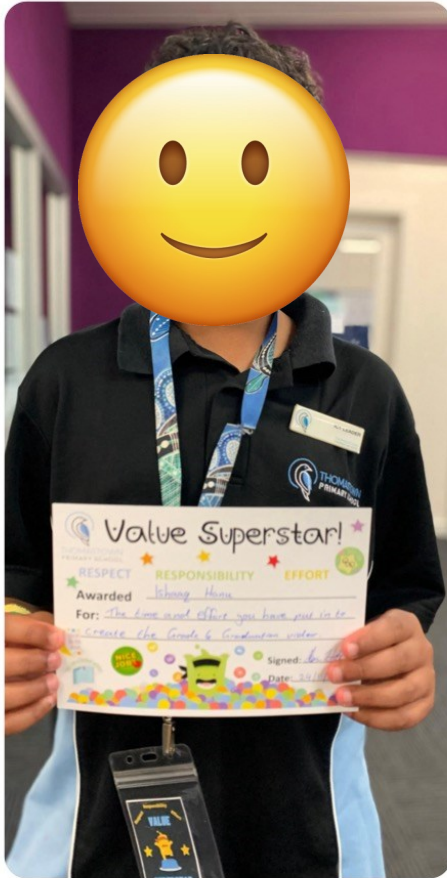
Tel: 9465 2225 Fax: 9465 5605



[thomastown.ps@education.vic.gov.au](mailto:thomastown.ps@education.vic.gov.au)

November/December Issue 2023

# Value Super Stars





# Value Stars



Congratulations to our  
Value Stars for showing our school values. Will you be next?







Join us on Friday the 8<sup>th</sup> of December from 11.30-1.30 for our Family Fun Day. It will be on the soccer pitch and be lots of fun! We would love to see you there 😊. Don't forget your school hat and sports clothes (long sleeves so we don't get sunburn).





# TPS Sport!





# Grade 5/6 MCG Visit!





# Grade 3/4 Integrated Flight Unit!







**PLAY**

# MILL PARK SUMMER HUB

**PLAY FOOTY WITH YOUR FRIENDS AND FAMILY THROUGH  
VARIOUS OFFERINGS THIS SUMMER**

## PLAY NAB AFL AUSKICK

- 4 weeks \$40
- For participants aged 5-8



## PLAY AFL SUPERKICK

- 5 weeks \$50
- For participants aged 8-12

## PLAY AFL NINES YOUTH & OPEN

- Youth - \$65pp for participants aged 13-18
- Open - \$100pp for participants older than 18



**THURSDAYS  
STARTS NOVEMBER 2**



Auskick & Superkick



Nines





**U14's Champions 22/23**



# JUNIOR PLAYERS WE WANT YOU!!

## About Keon Park:

Keon Park Cricket Club is a family orientated club and would love for you to get in touch if you are interested in joining our family.



### J C Donath Reserve - Oval #1

Corner of Harmer Street & Wagga Road  
Reservoir VIC 3073

#### Mixed teams - U16's, U14's, U12's

Games are Friday Nights at 5pm

Training on Sunday at 10am

#### Mixed teams - U10's

Games are Sunday morning at 10am

Training on Sunday at 10am

#### Junior Blasters - Ages 5 - 8

Saturday Mornings at 10am - 11am

Teaches kids to bat, bowl & field

From 11 October training moves to Wednesday at 4.30pm



**President: Shane Baker 0417670206**





City of  
Whittlesea

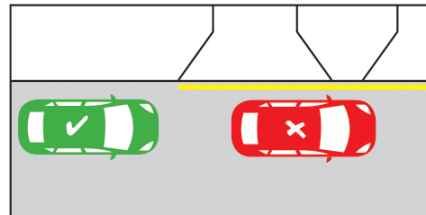
## PARKING AND SAFETY AROUND SCHOOLS

### Speed



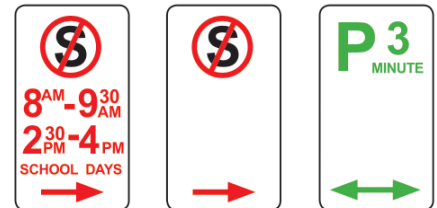
Look out for the reduced speed limit around schools and slow down to improve safety.

### Yellow edge line



A driver must not stop on the side of a road marked with a yellow edge line.

### Parking/Stopping signage



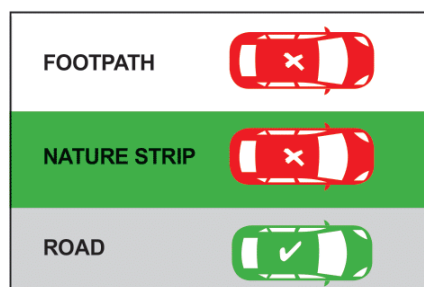
No stopping areas must be kept clear. If times/days are specified, restrictions are only applicable to the specified times/days. You cannot park in a P3 minute area for longer than three minutes.

### School crossings



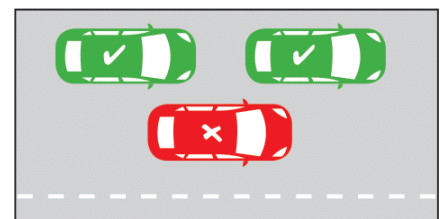
- Look out for flags and Crossing Supervisors
- You must stop for anyone waiting to cross, or who has started crossing
- Please remain stopped until the crossing is clear.

### No parking on nature strips/footpaths



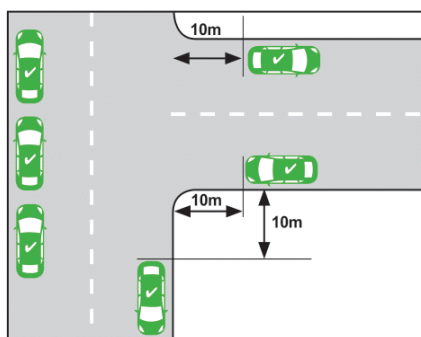
Parking is illegal on nature strips and footpaths.

### Double parking



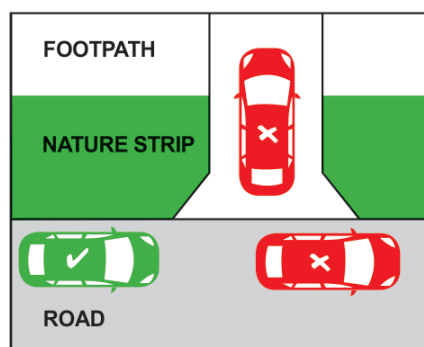
It is illegal to double park at any time. This affects the flow of traffic.

### Within 10 metres of an intersection



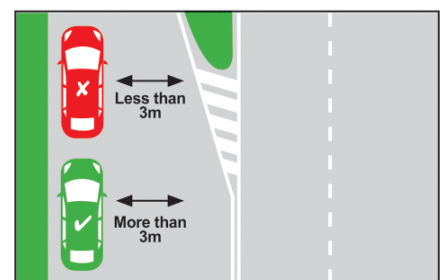
A driver must not stop with any part of their vehicle within 10 metres of an intersection unless signed otherwise.

### Stopping across driveways



It is illegal to, stop/park across a driveway unless you stay in the car are there for no more than two minutes and move immediately if required to do so to allow entry or exit by the owner/occupier.

### 3 metre gap for signage



At least 3 metres must be left between your vehicle and the centre dividing line to allow other vehicles to pass safely and not obstruct traffic.

### What can you do to stay safe

- Supervise your children in or near traffic
- Walk or cycle to school with your child
- Respect all road rules, parking signs and instructions from authorities
- Wait on the same side of the street as your child
- Always let your child out of the kerb side of the car.

#### Free Telephone Interpreter Service

العربية	9679 9871	Italiano	9679 9874
Ελληνικά	9679 9873	Македонски	9679 9875
हिंदी	9679 9879	简体中文	9679 9857

ਪੰਜਾਬੀ	9679 9879	Tiếng Việt	9679 9878
தமிழ்	9679 9879	Other	9679 9879
Türkçe	9679 9877		



## ANNUAL PRIVACY POLICY REMINDER FOR OUR SCHOOL COMMUNITY

Our school collects, uses, discloses and stores student and parent personal information for standard school functions or where permitted by law, as stated in the Schools' Privacy Policy. Please take time to read our school's collection notice, found on our website:

<https://www.thomastownps.vic.edu.au/>

We ask parents to also review the guidance we provide on how we use google software safely at the school and what parents can do to further protect their child's information. If after reviewing the guidance, you have any questions or concerns regarding your child please contact the school.

For more information about privacy, refer to: Schools' Privacy Policy — information for parents.